



1-3/4" THICK STANDARD TONGUE & GROOVE JOINT TRUE THERMAL BREAK USES STANDARD HARDWARE R-VALUE=16

Miltown Collection

INSULATED RESIDENTIAL GARAGE DOORS

THE MILTOWN COLLECTION combines style and durability with environmental friendliness and possesses many features which make it a perfect solution for both cold-weather and warm-weather climates. Polyurethane insulation is foamed in place, which ensures a consistent density and significant panel strength. 1-3/4" thick with an R-value of 16, the Miltown Collection contains a standard tongue and groove joint and a true thermal break.

Miltown Collection is available in 3 design choices. The raised panel mirrors the style of a traditional garage door, the ribbed panel resembles horizontal wood planks and the carriage house panel design offers an authentic replication of a high-end wood garage door.



LIFETIME
LIMITED WARRANTY

MAXIMUM
R-VALUE - 16

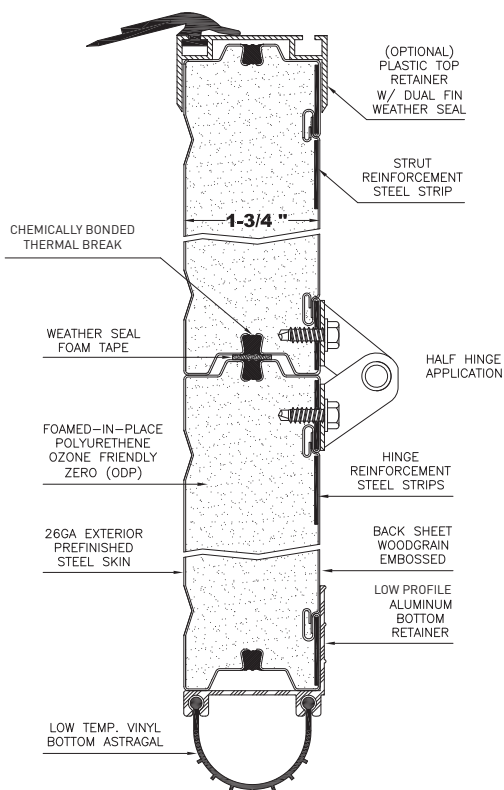


Specifications

SELECTION GUIDE

Thickness	1-3/4"
Exterior Panel Pre-finished Colours:	Wood Grain Embossed 26-Gauge
Wood Grain Print:	Stucco Embossed
Interior Steel Backsheet:	Stucco Embossed
Insulation Type/Foam Process:	Zero ODP Polyurethane/Continuous
R-Value/U-Value:	16.3/0.06
Thermal Break:	Chemically sealed & bonded
Section Joint:	Tongue & Groove
Horizontal Reinforcement Strip:	20-Gauge (3 per panel)
End Stiles – Galvanized:	20-Gauge
Maximum Standard Width:	18'0" (5486mm)
Maximum Standard Height:	3" increments
Section Height:	18", 21" & 24"*** ** woodgrain colours available in 18" & 21" only
Limited Warranty:	Lifetime
Hardware Warranty:	1-Year

Side View Illustration



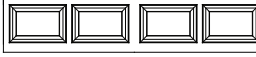
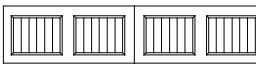

Tamper Resistant Safety Bottom Bracket eliminates tampering of cable while under tension to prevent accidental injury.

Windows

- a) Bronte Creek with Yorkland Window
- b) Sheridan with Watertown Insert
- c) Bronte Creek with Stockton Insert



Panel Choices

- A) SHERIDAN (RAISED PANEL) 
- B) BRONTE CREEK (CARRIAGE HOUSE) 
- C) TRAFALGAR (RIBBED PANEL) 

Colours

				ACTUAL DOOR COLOUR MAY VARY SLIGHTLY FROM THESE RENDITIONS.
WHITE	ALMOND	SANDTONE	BROWN	
				
LIGHT OAK	WALNUT	MEDIUM OAK	ROSEWOOD	



UPWARDOR
SINCE
1973

UPWARDOR® CORP. 8025 Lawson Road Milton, Ontario L9T 5C4
T 905.876.3667 F 905.876.3533 sales@upwardor.com www.upwardor.com

Upwardor® and Myllette 3000 are Registered Trade Marks of Upwardor Corp. Duplication is prohibited without express written consent of Upwardor Corp. Upwardor® reserves the right to change designs and specifications for design and quality improvements without notice and/or without incurring obligations. Revision 05.2004. ©2004 Upwardor® Corp.

INTERNATIONALLY PATENTED.

Distributor info: